

BICOL REGION MINERAL PROFILE



COMMUNITY DEVELOPMENT

Php 335.8 Million

Amount spent by operating mines for the development of their host and neighboring communities through their approved Social Development and Management Programs.



ENVIRONMENTAL PROTECTION

Php 780.4 Million

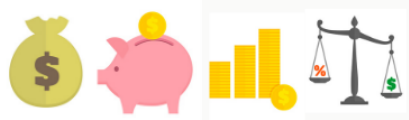
Amount committed by the operating mines for the implementation of their approved plans / programs / projects / activities under the Annual Environmental Protection and Enhancement Programs for Cy 2019.



REFORESTATION

2,983.8 hectares

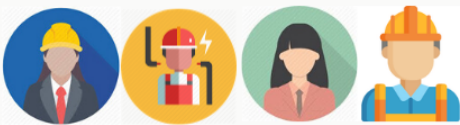
Total area being maintained by the operating mines in the Region.



ECONOMIC CONTRIBUTION

Php 3.7 Billion or 2.0%

Estimated Gross Regional Domestic Product (GRDP) of the Region under Mining and Quarrying.



JOB GENERATION

534

An average employment as of December 2019 at the operating mines all over the Region.

While estimates vary, it is conservatively projected that for every basic job in the mines, about four (4) ancillary/indirect jobs may be generated in the upstream and downstream sectors.



REVENUES

Php 2.5 Billion

Amount of national and local taxes, fees and royalties generated and contributed to the economy in 2019 by the operating mines in the Region.



Mines and Geosciences Bureau
REGIONAL OFFICE NO.V
region5@mgb.gov.ph
(052) 482-1056/1156
region5.mgb.gov.ph
IEC.2ndQtr.tin2020