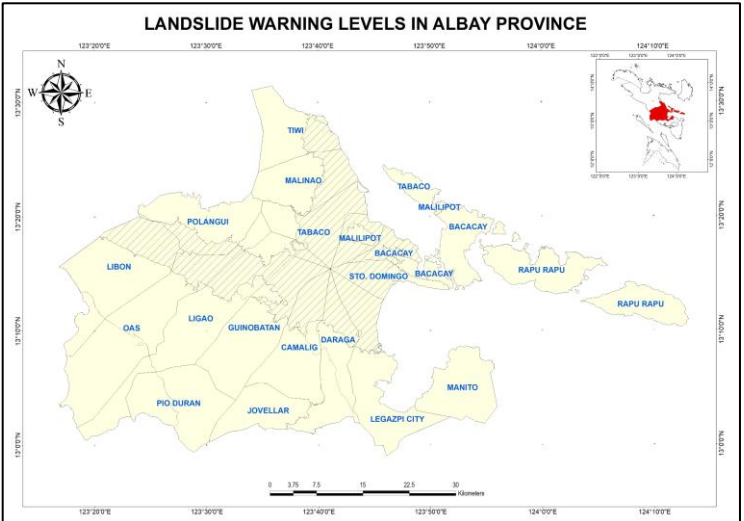




LANDSLIDE WARNING BULLETIN NO. 7
FOR TYPHOON "ODETTE"

Issued on December 17, 2021, at 6:00 a.m.
 Next bulletin: December 17, 2021, at 6:00 p.m.

LANDSCAPE UNITS	AREAS COVERED	CUMULATIVE & FORECAST RAIN	WARNING LEVEL	WARNING LEVEL	POSSIBLE SCENARIO	RECOMMENDED ACTIONS
1. Albay West Coast	Southwest Libon	34.18	0	0	<ul style="list-style-type: none"> Landslide probability is $\leq 10\%$ Landslide occurrence is very unlikely 	<ul style="list-style-type: none"> Monitor PAGASA's weather outlook on TV, radio and print media
	West Oas					
	West Ligao					
	West Pio Duran					
2. Albay Syncline	Libon	30.56	0	1	<ul style="list-style-type: none"> Landslide probability is $> 10\%$ to 50% Landslides may occur, especially if high rainfall intensity continues Few localized shallow landslides 	<ul style="list-style-type: none"> Convene the LDRRMC to prepare for landslide preparedness activities Identify residents at risk based on the MGB-V 1:10,000 scale landslide susceptibility map Advise residents dwelling in landslide-prone areas to prepare for possible evacuation Monitor real-time rainfall and PAGASA rainfall forecasts
	Central Oas					
	Central Ligao	29.93	0			
	South Guinobatan					
	Pio Duran					
	South Camalig					
	Jovellar					
	South Daraga					
3. Eroded Volcanic Landscapes	West Tiwi	46.89	0	2	<ul style="list-style-type: none"> Landslide probability is $> 50\%$ to 90% Landslide occurrence is possible in the next 24 hours Landslides are likely to occur in areas with modified slopes (e.g. road cuts) and high to very high landslide susceptibilities 	<ul style="list-style-type: none"> Convene the LDRRMC for immediate preparedness activities and execution of landslide evacuation protocols Keep close watch of areas with high and very high landslide susceptibilities Prepare for and/or execute landslide evacuation protocols for identified residents at risk
	West Malinao					
	Northwest Tabaco	26.57	0			
	Polangui					
	North Oas					
	North Ligao					
	Malilipot					
	Sto. Domingo					
	South Bacacay	47.15	0			
	Manito					
South Legazpi						
Daraga						
Camalig						
4. Ophiolitic Belt	Rapu-Rapu	87.55	0	3	<ul style="list-style-type: none"> Landslide probability is $> 90\%$ Landslides are probably occurring or are very likely to occur Multiple and widespread landslide occurrence 	<ul style="list-style-type: none"> Execute emergency response plans Advise residents to stay in designated evacuation centers until decampment orders are issued Report the location, date, and time of landslide occurrence to APSEMO or MGB-V
	Bacacay (Cagraray)					
	Malilipot (Cagraray)					
	Tabaco (San Miguel)					



Prepared by:

The Capstone Project Team/
 MGB-V Geohazards Operation Center

Reviewed by:

Arlene E. Dayao
 Arlene E. Dayao
 Chief Geologist

Approved by:

Guillermo A. Molina, Jr. IV
 Regional Director