



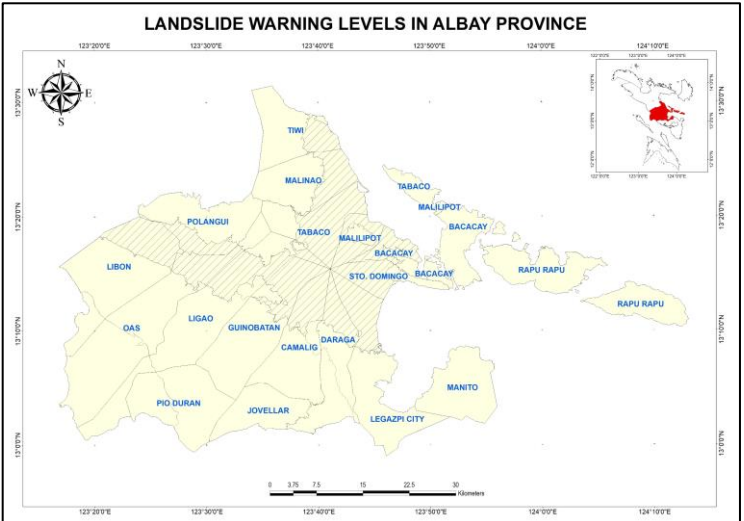
Republic of the Philippines
 Department of Environment and Natural Resources
MINES AND GEOSCIENCES BUREAU
 Regional Office No. V
 DENR Annex Bldg., Regional Center, Rawis, Legazpi City
 E-mail Address: region5@mgb.gov.ph
 Website: region5.mgb.gov.ph
 Telefax No. (052) 482-1056 Tel No. (052) 482-1156



LANDSLIDE WARNING BULLETIN NO. 6
FOR TYPHOON "ODETTE"

Issued on December 16, 2021, at 6:00 p.m.
 Next bulletin: December 17, 2021, at 6:00 a.m.

LANDSCAPE UNITS	AREAS COVERED	CUMULATIVE & FORECAST RAIN	WARNING LEVEL	WARNING LEVEL	POSSIBLE SCENARIO	RECOMMENDED ACTIONS				
1. Albay West Coast	Southwest Libon	28.48	0	0	<ul style="list-style-type: none"> Landslide probability is $\leq 10\%$ Landslide occurrence is very unlikely 	<ul style="list-style-type: none"> Monitor PAGASA's weather outlook on TV, radio and print media 				
	West Oas									
	West Ligao									
	West Pio Duran									
2. Albay Syncline	Libon	29.42	0	1	<ul style="list-style-type: none"> Landslide probability is $> 10\%$ to 50% Landslides may occur, especially if high rainfall intensity continues Few localized shallow landslides 	<ul style="list-style-type: none"> Convene the LDRRMC to prepare for landslide preparedness activities Identify residents at risk based on the MGB-V 1:10,000 scale landslide susceptibility map Advise residents dwelling in landslide-prone areas to prepare for possible evacuation Monitor real-time rainfall and PAGASA rainfall forecasts 				
	Central Oas									
	Central Ligao	27.64								
	South Guinobatan									
	Pio Duran									
	South Camalig									
	3. Eroded Volcanic Landscapes	West Tiwi	55.32				0	2	<ul style="list-style-type: none"> Landslide probability is $> 50\%$ to 90% Landslide occurrence is possible in the next 24 hours Landslides are likely to occur in areas with modified slopes (e.g. road cuts) and high to very high landslide susceptibilities 	<ul style="list-style-type: none"> Convene the LDRRMC for immediate preparedness activities and execution of landslide evacuation protocols Keep close watch of areas with high and very high landslide susceptibilities Prepare for and/or execute landslide evacuation protocols for identified residents at risk
		West Malinao								
Northwest Tabaco		27.78								
Polangui										
North Oas										
North Ligao										
4. Ophiolitic Belt	Malilipot	82.44	0	3	<ul style="list-style-type: none"> Landslide probability is $> 90\%$ Landslides are probably occurring or are very likely to occur Multiple and widespread landslide occurrence 	<ul style="list-style-type: none"> Execute emergency response plans Advise residents to stay in designated evacuation centers until decampment orders are issued Report the location, date, and time of landslide occurrence to APSEMO or MGB-V 				
	Sto. Domingo									
	South Bacacay									
	Manito									
	South Legazpi	58.09								
	Daraga									
	Camalig									
	Rapu-Rapu									
	4. Ophiolitic Belt	Bacacay (Cagraray)	98.43				0	0		
		Malilipot (Cagraray)								
Tabaco (San Miguel)										



Prepared by:

The Capstone Project Team/
 MGB-V Geohazards Operation Center

Reviewed by:

Arlene E. Dayao
 Arlene E. Dayao
 Chief Geologist

Approved by:

Guillermo A. Molina, Jr. IV
 Regional Director