



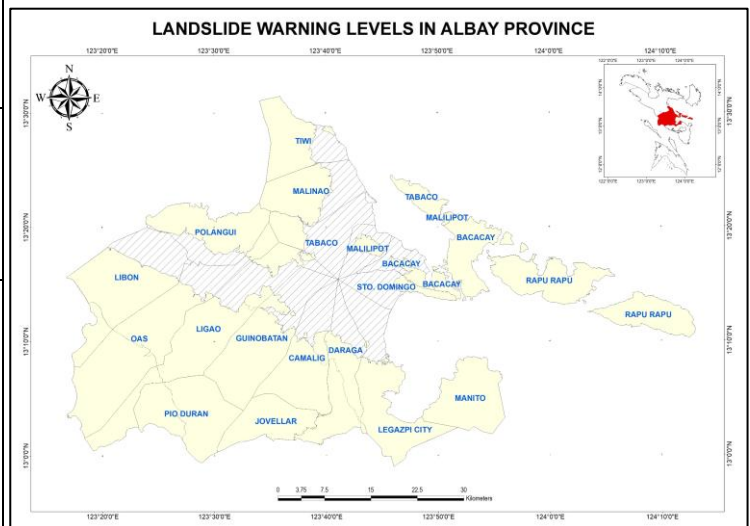
Republic of the Philippines
 Department of Environment and Natural Resources
MINES AND GEOSCIENCES BUREAU
 Regional Office No. V
 DENR Annex Bldg., Regional Center, Rawis, Legazpi City
 E-mail Address: region5@mgb.gov.ph
 Website: region5.mgb.gov.ph
 Telefax No. (052) 482-1056 Tel No. (052) 482-1156



LANDSLIDE WARNING BULLETIN NO. 1
 FOR *Tail End of Frontal System (TEFS)*

Issued on December 27, 2021, at 9:00 a.m.
 Next bulletin: December 27, 2021, at 6:00 p.m.

LANDSCAPE UNITS	AREAS COVERED	CUMULATIVE & FORECAST RAIN	WARNING LEVEL	WARNING LEVEL	POSSIBLE SCENARIO	RECOMMENDED ACTIONS
1. Albay West Coast	Southwest Libon	73.18	0	0	<ul style="list-style-type: none"> Landslide probability is ≤ 10% Landslide occurrence is very unlikely 	<ul style="list-style-type: none"> Monitor PAGASA's weather outlook on TV, radio and print media
	West Oas					
	West Ligao					
	West Pio Duran					
2. Albay Syncline	Libon	73.85	0	1	<ul style="list-style-type: none"> Landslide probability is > 10% to 50% Landslides may occur, especially if high rainfall intensity continues Few localized shallow landslides 	<ul style="list-style-type: none"> Convene the LDRRMC to prepare for landslide preparedness activities Identify residents at risk based on the MGB-V 1:10,000 scale landslide susceptibility map Advise residents dwelling in landslide-prone areas to prepare for possible evacuation Monitor real-time rainfall and PAGASA rainfall forecasts
	Central Oas					
	Central Ligao	72.06				
	South Guinobatan					
	Pio Duran	71.12	0			
	South Camalig					
	Jovellar					
	South Daraga					
3. Eroded Volcanic Landscapes	West Tiwi	78.66	0	2	<ul style="list-style-type: none"> Landslide probability is > 50% to 90% Landslide occurrence is possible in the next 24 hours Landslides are likely to occur in areas with modified slopes (e.g. road cuts) and high to very high landslide susceptibilities 	<ul style="list-style-type: none"> Convene the LDRRMC for immediate preparedness activities and execution of landslide evacuation protocols Keep close watch of areas with high and very high landslide susceptibilities Prepare for and/or execute landslide evacuation protocols for identified residents at risk
	West Malinao					
	Northwest Tabaco	75.61				
	Polangui					
	North Oas					
	North Ligao	88.68	0			
	Malilipot					
	Sto. Domingo					
	South Bacacay					
	4. Ophiolitic Belt	Manito	77.74			
South Legazpi						
Daraga						
Camalig						
4. Ophiolitic Belt	Rapu-Rapu	86.75	0	3	<ul style="list-style-type: none"> Landslide probability is > 90% Landslides are probably occurring or are very likely to occur Multiple and widespread landslide occurrence 	<ul style="list-style-type: none"> Execute emergency response plans Advise residents to stay in designated evacuation centers until decampment orders are issued Report the location, date, and time of landslide occurrence to APSEMO or MGB-V
	Bacacay (Cagraray)					
	Malilipot (Cagraray)					
	Tabaco (San Miguel)					



Prepared by:

The Capstone Project Team/
 MGB-V Geohazards Operation Center

Reviewed by:

Arlene E. Payao
 Arlene E. Payao
 Chief Geologist

Approved by:

Guillermo A. Molina, Jr. IV
 Regional Director