



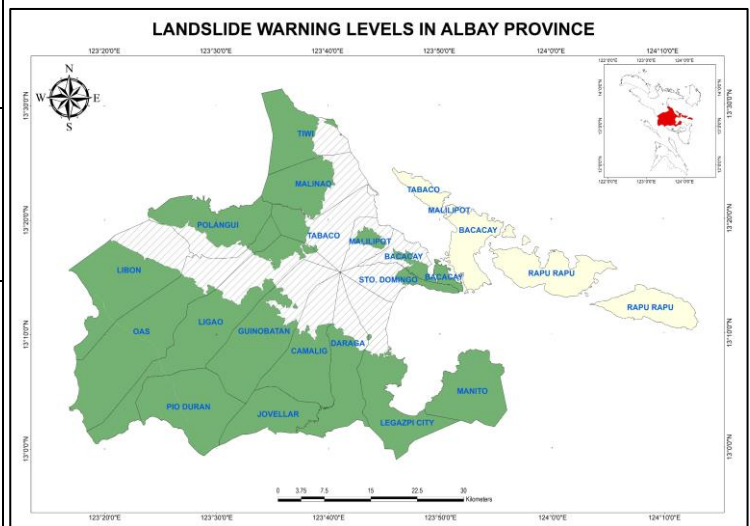
Republic of the Philippines
 Department of Environment and Natural Resources
MINES AND GEOSCIENCES BUREAU
 Regional Office No. V
 DENR Annex Bldg., Regional Center, Rawis, Legazpi City
 E-mail Address: region5@mgb.gov.ph
 Website: region5.mgb.gov.ph
 Telefax No. (052) 482-1056 Tel No. (052) 482-1156



LANDSLIDE WARNING BULLETIN NO. 3
FOR TYPHOON "BISING"

Issued on April 19, 2021, at 6:00 a.m.
 Next bulletin: April 19, 2021, at 6:00 p.m.

LANDSCAPE UNITS	AREAS COVERED	CUMULATIVE & FORECAST RAIN	WARNING LEVEL	WARNING LEVEL	POSSIBLE SCENARIO	RECOMMENDED ACTIONS			
1. Albay West Coast	Southwest Libon	198.71	1	0	<ul style="list-style-type: none"> Landslide probability is ≤ 10% Landslide occurrence is very unlikely 	<ul style="list-style-type: none"> Monitor PAGASA's weather outlook on TV, radio and print media 			
	West Oas								
	West Ligao								
	West Pio Duran								
2. Albay Syncline	Libon	198.23	1	1	<ul style="list-style-type: none"> Landslide probability is > 10% to 50% Landslides may occur, especially if high rainfall intensity continues Few localized shallow landslides 	<ul style="list-style-type: none"> Convene the LDRRMC to prepare for landslide preparedness activities Identify residents at risk based on the MGB-V 1:10,000 scale landslide susceptibility map Advise residents dwelling in landslide-prone areas to prepare for possible evacuation Monitor real-time rainfall and PAGASA rainfall forecasts 			
	Central Oas								
	Central Ligao	197	1						
	South Guinobatan								
	Pio Duran								
	South Camalig	157.19	1				2	<ul style="list-style-type: none"> Landslide probability is > 50% to 90% Landslide occurrence is possible in the next 24 hours Landslides are likely to occur in areas with modified slopes (e.g. road cuts) and high to very high landslide susceptibilities 	<ul style="list-style-type: none"> Convene the LDRRMC for immediate preparedness activities and execution of landslide evacuation protocols Keep close watch of areas with high and very high landslide susceptibilities Prepare for and/or execute landslide evacuation protocols for identified residents at risk
	Jovellar								
	South Daraga								
3. Eroded Volcanic Landscapes	West Tiwi	169.79	1	3	<ul style="list-style-type: none"> Landslide probability is > 90% Landslides are probably occurring or are very likely to occur Multiple and widespread landslide occurrence 	<ul style="list-style-type: none"> Execute emergency response plans Advise residents to stay in designated evacuation centers until decampment orders are issued Report the location, date, and time of landslide occurrence to APSEMO or MGB-V 			
	West Malinao								
	Northwest Tabaco	172.74	1						
	Polangui								
	North Oas								
	North Ligao	146.13	1						
	Malilipot								
	Sto. Domingo								
	South Bacacay								
	Manito	123.39	1						
South Legazpi									
Daraga									
Camalig									
4. Ophiolitic Belt	Rapu-Rapu	145.74	0						
	Bacacay (Cagraray)								
	Malilipot (Cagraray)								
	Tabaco (San Miguel)								



Prepared by:

The Capstone Project Team/
 MGB-V Geohazards Operation Center

Reviewed by:

Arlene E. Dayao
 Arlene E. Dayao
 Chief Geologist

Approved by:

Guillermo A. Molina, Jr. IV
 Regional Director